



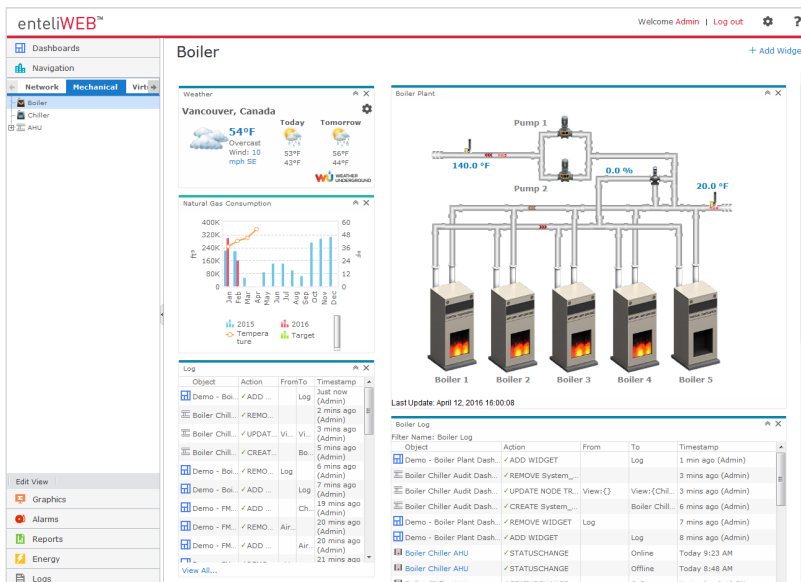
## Software: Enterprise Facility and Energy Management

### Description

enteliWEB is a web-based application that connects all your facilities and centralizes building management operations, site engineering, and energy analytics.

View your building your way by creating your own personal dashboards. Whether you are an executive, an energy manager, or a building operator, the user experience in enteliWEB can be tailored to meet your exact needs.

- **Energy Analytics** inside of enteliWEB enables you to turn the existing data and sensors inside your building into virtual meters and manage energy consumption down to the zone and equipment level. This software-based approach gives you a complete level of knowledge at a fraction of the cost of installing sub-meters.
- **Engineering Tools** in enteliWEB allow you to create, edit, and save objects, modify system graphics, and back up databases from a single modern-looking front end.
- **Centralize Facility Management** and make it easy to integrate scheduling, alarm management, and operations. Connect to all of your buildings under a single login without having to network everything together. Track all building automation system (BAS) changes by service personnel, partner technicians, and facility managers in enteliWEB.



### Specifications

#### BACnet Device Profile

Advanced Operator Workstation (B-AWS)  
Secure Connect Hub (B-SCHUB)

#### Server Operating System

Microsoft Windows Server 2016  
Microsoft Windows Server 2019  
Microsoft Windows Server 2022  
Microsoft Windows 10  
Microsoft Windows 11

#### Server Virtualization

VMware vCenter Server  
Microsoft Hyper-V  
Microsoft Azure  
Amazon EC2  
Rackspace Cloud Server

#### Client Operating System

Microsoft Windows Server 2016  
Microsoft Windows Server 2019  
Microsoft Windows Server 2022  
Microsoft Windows 11

Enterprise, Pro, Education, IoT  
Microsoft Windows 10  
Enterprise, Pro, Education, IoT  
Apple macOS X v10.4+

#### Client Browser

Google Chrome 80+  
Microsoft Edge 80+  
Mozilla Firefox 73+  
Apple Safari 13+

# enteliWEB®

## enteliVAULT® Archiving

enteliVAULT provides powerful, secure data archiving.

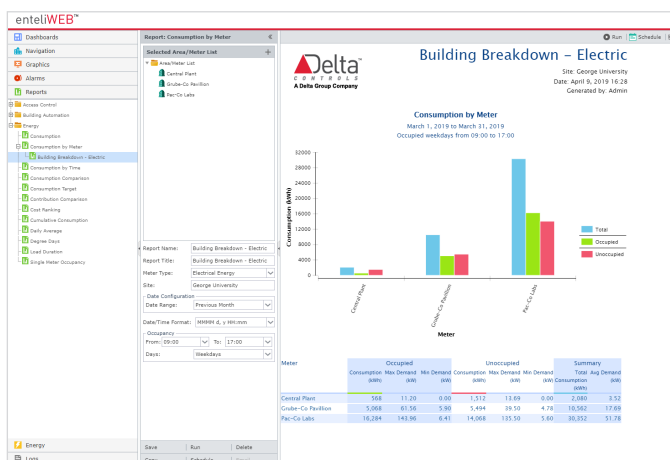
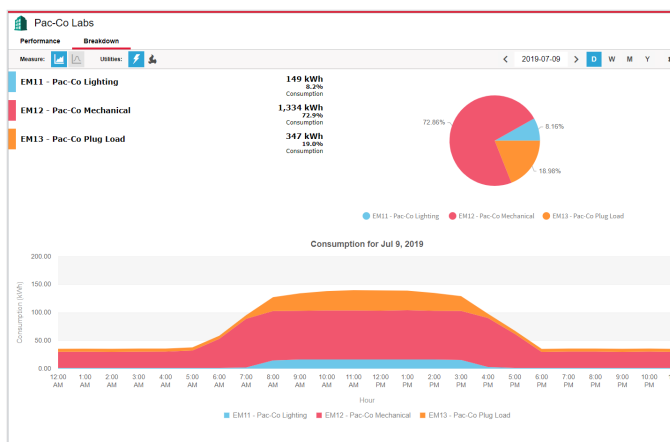
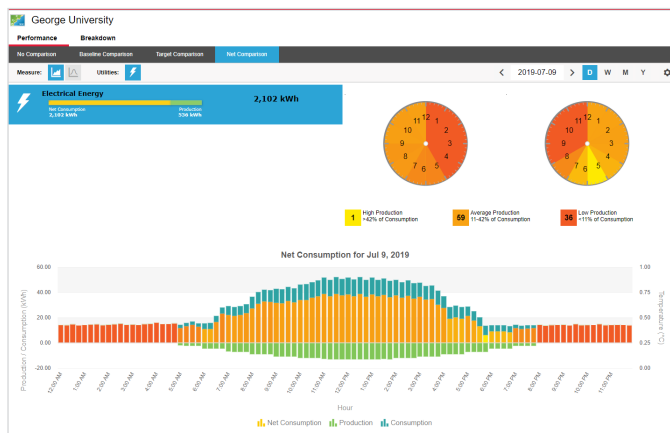
- **Up to 100,000 Trend Logs Supported.** Allows large amount of data to be stored in a central location that is easy to manage.
- **Improved Workflows.** Easy to set up and use, with no hardware or software to install, or firewalls to manage. Detects and archives all trend logs on site automatically.
- **Energy Management Integration.** Shows energy reports and archived meter data when the Energy Management add-on is enabled in enteliWEB.

## enteliWEB Energy

enteliWEB Energy is an enterprise energy management package that makes it easy for anyone to understand the energy usage of their building.

Leveraging the rich dashboard interface of enteliWEB, you can view your system's energy usage, set target energy goals, and compare your energy usage against historical baselines.

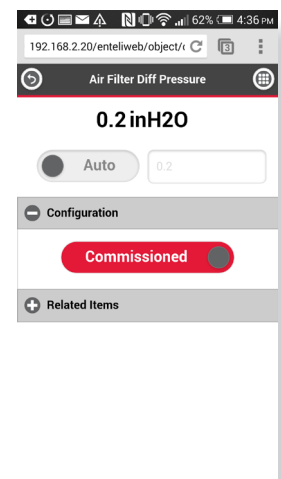
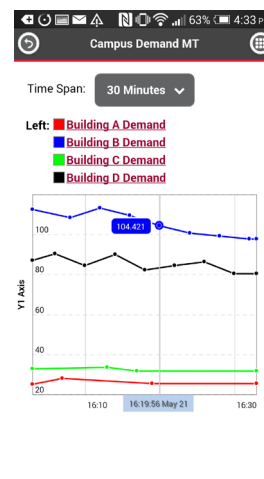
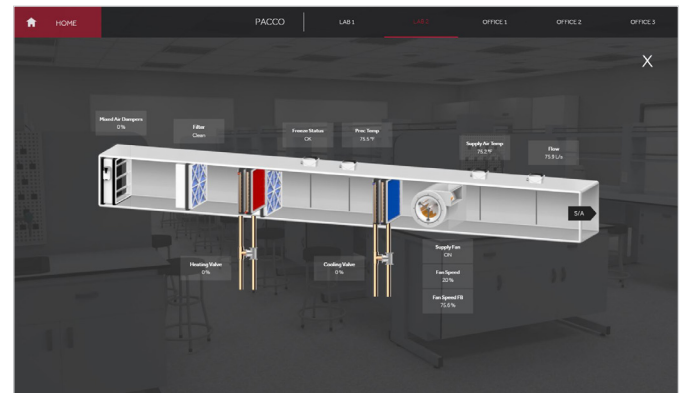
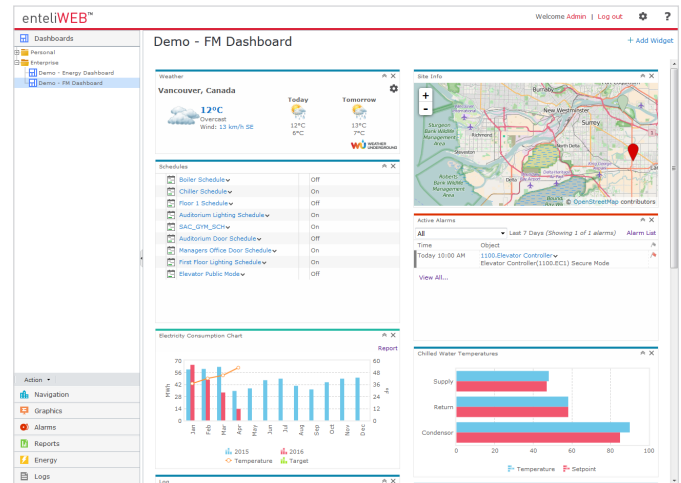
- **Local or Cloud Applications.** enteliWEB Energy is the only energy analytics solution that scales from locally installed dashboards and reports to powerful cloud-based analytics.
- **Virtual Meters.** Find out exactly which building system is consuming too much energy without having to install costly wired meters. Virtual Meters utilize sensors and the data already gathered by the building automation system to track the energy consumption of every piece of equipment in your building, giving you unprecedented visibility into your consumption profile. You can also validate the calculated virtual meters with upstream utility meters.
- **Tracking Energy Production.** If your site generates power from renewable resources, use the interactive calendar in enteliWEB Energy to locate periods of highest and lowest production, and any net gains from production in a comparison chart.
- **Intuitive Dashboards.** These interactive dashboards allow you to analyze and breakdown usage to find energy savings. You can also create energy reports, and send and receive them by email.
- **Alerts and Insights.** Simple alerts to analytics-based Insights warn you in advance of potential consumption overages. Both alerts and Insights are annunciated in enteliWEB and can also be set up for email notification.



## Visualizing Your Building

enteliWEB makes your data more accessible by presenting information in a visually attractive and user-friendly way.

- **Enterprise Dashboards.** Provide high level information in simple graphical formats to help manage the facility's key performance indicators (KPIs).
- **Personal Dashboards.** Personal dashboards are an experience you create yourself. By mixing and matching widgets, each user gets their own personalized dashboard to keep an eye on things that matter.
- **System Dashboards.** Make operating a facility easy by aggregating system graphics, alarm management, energy information, and more into a single dashboard screen.
- **Navigator.** Automatically scans the BACnet network and presents devices in a logically arranged network tree. BACnet objects can be monitored and commanded directly from Navigator, or opened from Navigator to change the configuration details.
- **enteliVIZ™ Graphics.** Create HTML5-based intelligent visualizations and equipment graphics in your web browser. Use them in dashboards alongside other widgets, or as full-page standalone graphics.
- **Mobile Friendly.** Dashboard and object pages are optimized for viewing on your smartphone or tablet. Whether you just want an overview, or you need to override a point, dashboard-driven navigation makes it easy to drill down from high-level views to specific BACnet objects. Finger-friendly buttons and large text mean you don't have to pinch-and-zoom to view content.
- **Multiple Language Display.** Support your stakeholders in the language that they are most comfortable using. enteliWEB's user interface can be displayed in one of 22 world languages by selecting the language preference in each user account.
- **Building Automation Reports.** Gather information about your building by querying controllers on the network and displaying them in professional-looking reports. Reports can be converted to multiple file types, such as .pdf and .xlsx and emailed automatically on a schedule.

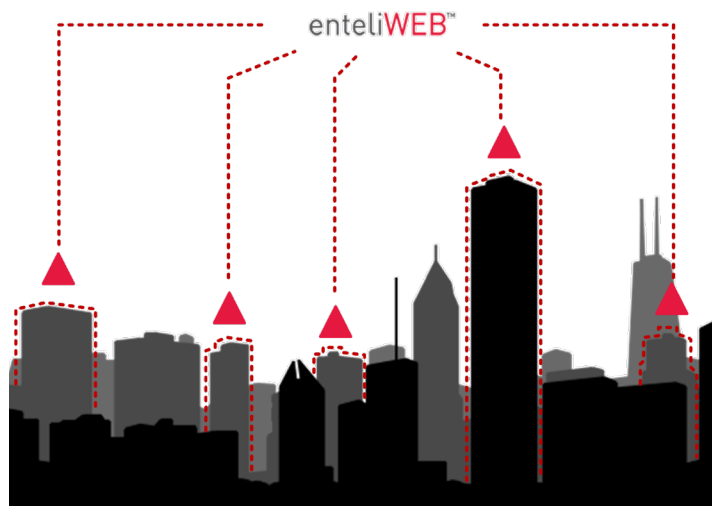


# enteliWEB®

## Centralizing Facility Management

enteliWEB provides you the tools to manage multiple sites more effectively.

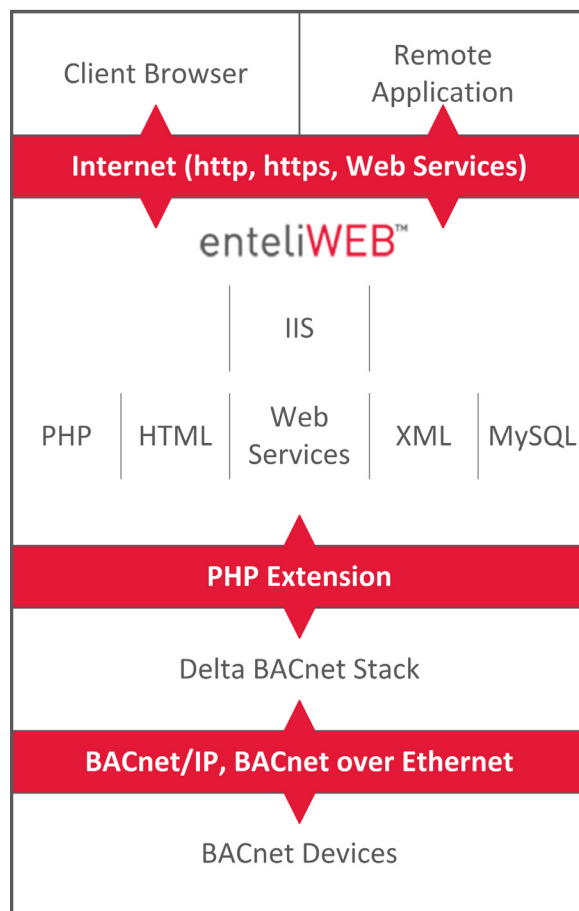
- ▶ **Single Login.** Manage multiple sites using a single login. No need to worry about duplicate addresses or networking everything together. All you need is an IP address for each site.
- ▶ **Retain Supervisory Control** of your entire portfolio of BACnet sites. Leave the other vendor's front end on-site while centralizing your alarm management, scheduling, and energy analytics with enteliWEB.
- ▶ **Version Independent Software.** Allows organizations to operate an entire WAN without having to worry about maintaining different firmware versions in the hardware.
- ▶ **Restore and Backup.** Restore your entire BAS to an earlier state or quickly find a specific backup of a device. Schedule daily, weekly, or monthly backups across devices on multiple sites.



## Platform for Innovation

enteliWEB's suite of development tools allow you to create mobile apps, customize user interfaces, and integrate third-party software.

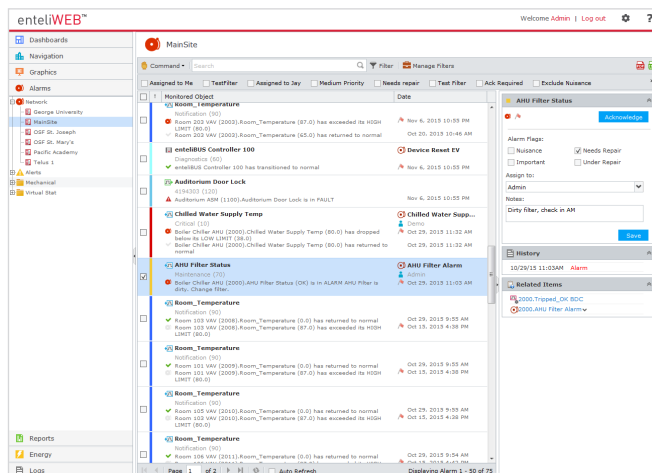
- ▶ **API Documentation Available.** The enteliWEB application programming interface (API) is well-documented, allowing you to easily create custom modules, widgets, and interfaces to third-party software.
- ▶ **BACnet Web Services.** Allow remote applications, such as mobile apps or business systems, to communicate with enteliWEB.
- ▶ **Alarm Module.** The alarm module allows alerts and alarms from non-BACnet systems to be annunciated and managed within enteliWEB.
- ▶ **Open Source Reporting Package.** Design custom reports in enteliWEB using an industry-standard open source report package.
- ▶ **ODBC Driver.** Integrate the building automation system with business-level software.



## Alarms

enteliWEB has a robust alarm management system that provides a detailed look at the issues and problems that come up on your sites.

- **Comprehensive Alarm Management.** Includes intelligent visualizations, alarm assignments, and operator comments on one screen. Powerful filtering, emailing, and prioritization make enteliWEB alarm management effective on even the largest sites.
- **Alarm Widgets.** Can be added to any dashboard for a quick summary of specific data types. The maps widget uses push pins on a map of your building locations to indicate the number and severity of alarms. The alarm list widget shows the active alarms for specific equipment and the widget can be added to system dashboards.

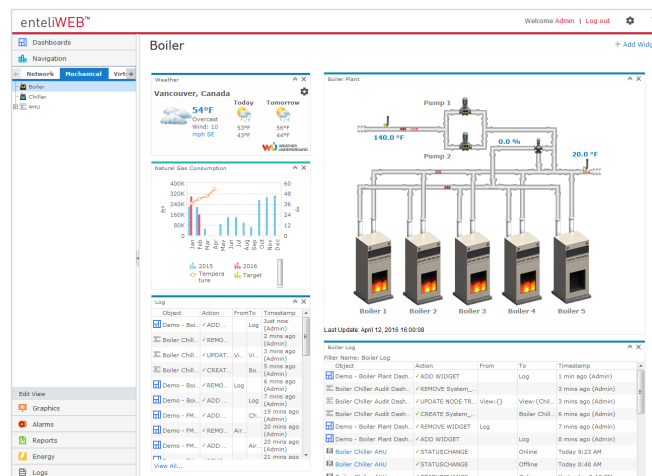


## Electronic Signatures

enteliWEB supports electronic record regulations like FDA Code of Regulations Title 21 Part 11 by enforcing electronic signatures on modifications made in these validated environments. Signatures are recorded in the enteliWEB audit log. For more information, see the enteliWEB FDA 21 CFR Part 11 Compliance white paper.

## User Permissions

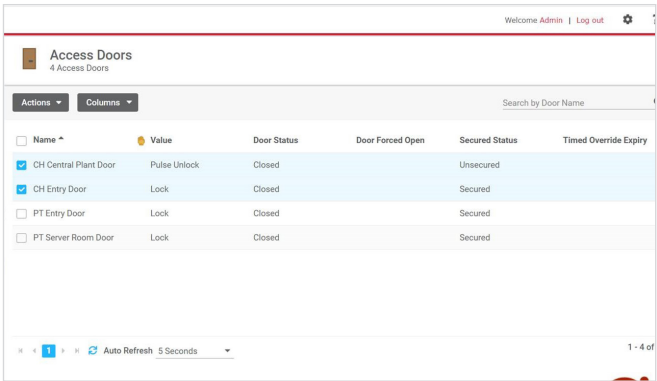
- **User/Group Permissions.** Permissions give you the ability to assign roles and determine which BACnet objects and visualizations a user can see and interact with.
- **LDAP.** Integrate users from LDAP servers so that IT can control user access to enteliWEB.
- **Multilanguage Support.** Gives each user the option to select the language they want to use throughout enteliWEB.



## enteliWEB provides intuitive user-friendly dashboards to

The built-in access control dashboards leverage enteliWEB's single-seat management interface so that you can easily enroll, provision, assign and manage access rights.

- | Security Guard View <span>⚙️</span>   |                     |                         |                    |             |           |           |  |
|---|---------------------|-------------------------|--------------------|-------------|-----------|-----------|--|
| Total Events: 81  |                     |                         |                    |             |           |           |  |
| Current Window: Last 4 Hours <span>⌵</span>                                 |                     |                         |                    |             |           |           |  |
| <span>🔴 0 Critical</span> <span>🔴 5 Alerts</span> <span>🟢 44 Suspect</span> |                     |                         |                    |             |           |           |  |
| Event Type  | Event Time          | Door / Device ID        | Access User ID     | Site ID     | Details   |           |  |
| Denied Unknown Credential   | 2020-07-22 18:58.43 | IT Room-Maintenance-AC2 |                    | Access ID#1 | 🔍 Details | 🔍 Details |  |
|   | 2020-07-22 18:58.40 | Avery Lounge Office     | BM Brandon Martin2 | Access ID#1 |           |           |  |
| Denied No Access Rights   | 2020-07-22 18:56.37 | IT Room-Maintenance-AC2 | JA Jonathan Adams2 | Access ID#1 | 🔍 Details | 🔍 Details |  |
|   | 2020-07-22 18:56.35 | IT Room-Maintenance-AC2 | LC Cynthia Zarek2  | Access ID#1 |           |           |  |
| Denied Credential Expired   | 2020-07-22 18:56.35 | IT Room-Maintenance-AC2 | JA Jonathan Adams2 | Access ID#1 | 🔍 Details |           |  |
| Granted   | 2020-07-22 18:56.31 | Access ID#1             | CA Caleb Kley2     | Access ID#1 | 🔍 Details | 🔍 Details |  |
|   | 2020-07-22 18:56.23 | IT Room-Maintenance-AC2 | JA Jonathan Adams2 | Access ID#1 |           |           |  |
| Denied No Access Rights   | 2020-07-22 18:56.23 | IT Room-Maintenance-AC2 | BM Brandon Martin2 | Access ID#1 | 🔍 Details |           |  |
| Granted   | 2020-07-22 18:56.17 | Avery Lounge Office     | BM Brandon Martin2 | Access ID#1 | 🔍 Details | 🔍 Details |  |
|   | 2020-07-22 18:56.16 | IT Room-Maintenance-AC2 | BM Brandon Martin2 | Access ID#1 |           |           |  |
| Denied Unknown Credential   | 2020-07-22 18:56.04 | IT Room-Maintenance-AC2 | LC Cynthia Zarek2  | Access ID#1 | 🔍 Details | 🔍 Details |  |
|   | 2020-07-22 18:56.04 | IT Room-Maintenance-AC2 | JA Jonathan Adams2 | Access ID#1 |           |           |  |
| Denied No Access Rights   | 2020-07-22 18:55.55 | Avery Lounge Office     | BM Brandon Martin2 | Access ID#1 | 🔍 Details |           |  |
| Granted   | 2020-07-22 18:55.50 | IT Room-Maintenance-AC2 | BM Brandon Martin2 | Access ID#1 | 🔍 Details | 🔍 Details |  |
|   | 2020-07-22 18:55.06 | IT Room-Maintenance-AC2 | BM Brandon Martin2 | Access ID#1 |           |           |  |
| Granted   | 2020-07-22 18:55.02 | Avery Lounge Office     | CA Caleb Kley2     | Access ID#1 | 🔍 Details |           |  |
| Denied Unknown Credential   | 2020-07-22 18:55.03 | Avery Lounge Office     |                    | Access ID#1 | 🔍 Details |           |  |
| Denied Authentication Factor  | 2020-07-22 18:55.01 | Avery Lounge Office     | JA Jonathan Adams2 | Access ID#1 | 🔍 Details |           |  |
| Denied Unknown Credential   | 2020-07-22 18:55.00 | IT Room-Maintenance-AC2 | LC Cynthia Zarek2  | Access ID#1 | 🔍 Details |           |  |
| Denied Authentication Factor  | 2020-07-22 18:55.00 | IT Room-Maintenance-AC2 | LC Cynthia Zarek2  | Access ID#1 | 🔍 Details |           |  |
| Denied Authentication Factor  | 2020-07-22 18:55.00 | Avery Lounge Office     | JA Jonathan Adams2 | Access ID#1 | 🔍 Details |           |  |
| Denied Credential Expired   | 2020-07-22 18:55.00 | IT Room-Maintenance-AC2 | LC Cynthia Zarek2  | Access ID#1 | 🔍 Details |           |  |



Audit logs provide the ability to track changes made to the

[illegible]



## Software: Enterprise Facility and Energy Management

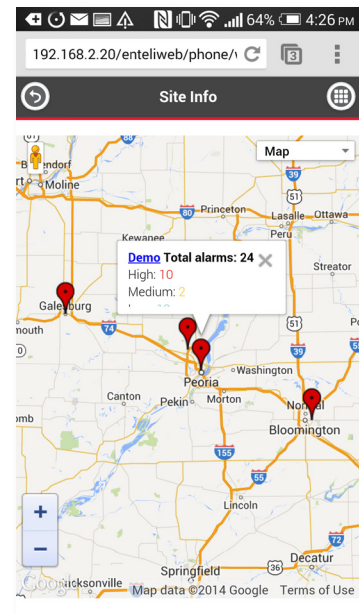
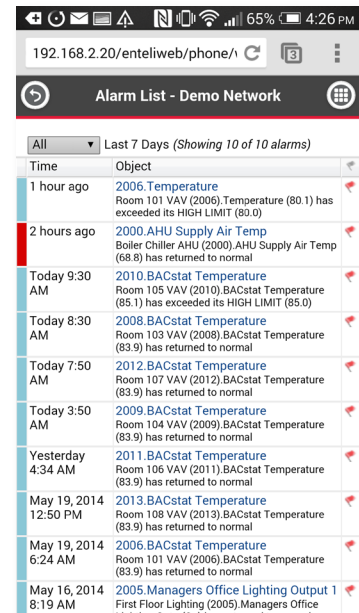
### Ordering

enteliWEB is available in 200, 500, 1000, 2500, and Enterprise editions.  
All editions and add-ons include 1-year software maintenance subscription.

Edition	Includes	Select One or More Add-Ons
eW200	200 I/O, multiple sites	<b>-EV</b> enteliVIZ graphics <b>-EM</b> Energy management <b>-VLT</b> enteliVAULT <b>-VM</b> enteliWEB on an offline virtual machine <b>-API</b> Web services, mobile app, interface API and ODBC Driver
eW500	500 I/O, multiple sites	
eW1000	1000 I/O, multiple sites	
eW2500	2500 I/O, multiple sites	
eWEnt	5000 I/O (expandable with add-ons), multiple sites	<b>-EV</b> enteliVIZ graphics <b>-EM</b> Energy management <b>-VLT</b> enteliVAULT <b>-VM</b> enteliWEB on an offline virtual machine <b>-API</b> Web services, mobile app, interface API and ODBC Driver <b>-2500IO</b> 2500 I/O point add-on <b>-25kIO</b> 25000 I/O point add-on <b>-UnLtd</b> Unlimited I/O point add-on

### 03 Access Dashboards

Select add-on	03ACC50	03ACC250	03ACC500	03ACC1000	03ACCUnLtd
	03 Access Dashboards license up to 50 doors	03 Access Dashboards license up to 250 doors	03 Access Dashboards license up to 500 doors	03 Access Dashboards license up to 1000 doors	03 Access Dashboards license with unlimited doors



enteliWEB and enteliVAULT are registered trademarks of Delta Controls Inc. All other trademarks are the property of their respective owners.

Updated July 2022

Subject to change without notice.